



by VR Agency Travel & Trade Co. Ltd.  
ใบอนุญาต/Travel License: 11/11450



LINE @etravelway

Facebook @etravelway

Instagram etravelway

Phone 021166395

Z10495



แพ็คเกจเรือตัดน้ำแข็ง มหาสมุทรอาร์กติก 25 วัน 24 คืน



พักผ่อนเรือ Le Commandant Charcot By Ponant, Luxury cruises, Cruise Only

เรือสำรวจขั้วโลก แบบไฮบริดไฟฟ้าลำแรกที่ขับเคลื่อนโดย LNG

ด้วยเทคโนโลยีการออกแบบอย่างทันสมัย, มีความปลอดภัย และเป็นมิตรกับสิ่งแวดล้อม

The Northwest Passage : Reykjavík - Nome, Alaska



แพ็คเกจเรือตัดน้ำแข็ง มหาสมุทรอาร์กติก  
Le Commandant Charcot, Cruise Only

25 วัน 24 คืน รหัส: Z10495

ปกติเริ่มต้น ~~50,582~~ EUR/ท่าน

เหลือเริ่มต้น **38,870** EUR/ท่าน

โปรโมชั่น ลด 30% Ponant Bonus แล้ว

เดินทาง 12ส.ค.-5ก.ย. 2567

- เส้นทาง The Northwest Passage
- พักบนเรือสำราญ 24 คืน
- รวม กั๋วร์เสริมบนฝั่ง, อาหาร เครื่องดื่ม, Wifi บนเรือสำราญ
- ฟรี เที่ยวบินเหมาลำจากโนมสู่ซีแอตเทิล, รถรับส่ง 1 เที่ยว

eTravelWay.com  
Tel.: 0 2116 6395  
LINE @etravelway



LINE @etravelway

@etravelway.fire

@etravelway.sky

Emergency call only : 0853642449

tour.bkk@etravelway.com

www.youtube.com/etravelway

www.etravelway.com

VS100723

Page 1 of 26







เส้นทาง เรคยาวิก, ไอซ์แลนด์ - ช่องแคบเดนมาร์ก - ธารน้ำ Prins Christian Sund - หมู่บ้าน  
ออปปีลโตก (Augpilatok) - นุก - อ่าวดิสโก้ - พอนด์ อินเล็ต, นูนาวุต - แลงคาสเตอร์ ซาวด์ -  
เกาะเดวอน, นูนาวุต, แคนาดา - เกาะปีชีย์, นูนาวุต, แคนาดา - สํารวจทะเลน้ำแข็ง ด้านตะวันตก  
เฉียงเหนือ - เกาะแบงส์ - สํารวจทะเลน้ำแข็ง ทะเลโบฟอร์ต - ล่องเรือในทะเลโบฟอร์ต -  
ช่องแคบเบริง - โนม, อลาสก้า

กำหนดการเดินทาง วันที่ 12ส.ค.-5ก.ย. 67





With featured guests Ian Dawson and Sue Flood, British Photo Ambassadors.

Explore the expanse of the Arctic world during extraordinary polar odyssey from **Iceland** to **Alaska**, via the mythical **Northwest Passage**. The greatest explorers long coveted travelling from the Atlantic Ocean to the Pacific Ocean via the **Far North route** before **Roald Amundsen** accomplished the feat during his expedition from 1903 to 1906. Although this crossing is now legendary, PONANT invites you to go even further, aboard *Le Commandant Charcot*, by **sailing along a virtually unexplored maritime route**.

Like a perfect prelude to your discovery of the polar world, the latest addition to the PONANT fleet will first take you on a magnificent ascent up the **west coast of Greenland to the majestic Disko Bay**. A **UNESCO World Heritage Site**, it will reveal itself to you between its mythical glacier and the graceful dance of monumental icebergs.

Next, you will enter the **Northwest Passage** via **Lancaster Sound** then **through the ice of McClure Strait**. Following in the wake of one of the most mythical sagas in polar exploration, the ship will progress through to **Banks Island**, and gradually immerse you in a constantly changing world of ice. The infinity of the ice floe will unveil itself, moving, treating the eyes to beauties sculpted by nature and enhanced by the changing light. Aboard *Le Commandant Charcot*, a luxurious setting designed to navigate in extreme zones, you will continue into the **Beaufort Sea** and explore landscapes that are inaccessible to traditional ships. The ice covering reshapes the relief and reveals an incredible sensorial experience for the modern-day explorers. Your immersion in the northern world will also lead you to encounter the **Inuit people** for special moments of sharing based on their **traditions**. In the heart of the ice or at the confluence of the currents, there where all is pristine and wild, **nature reigns supreme and** an encounter with a **polar bear** is always a wonderful experience.

Beyond the **Arctic Circle**, your senses will further be ignited as the sight of the **glistening ice floes, blue-tinged glaciers, rugged mountain chains** and **rolling tundra** captivates you. Long fantasised about before being discovered at the beginning of the 20th century, the Northwest Passage promises you a trip that is synonymous with going back to basics.

**Find out more about the world of *Le Commandant Charcot* here!**

*We are privileged guests in these extreme lands where we are at the mercy of weather and ice conditions. Our navigation, mainly in the fjords, will be determined by the type of ice we come across; as the fast ice must be preserved, we will take this factor into account from day to day in our itineraries. The sailing programme, outings, activities and observation of fauna cannot be guaranteed and are subject to weather and ice conditions. The experiences are unique and vary from day to day and for each departure. The Captain and the Expedition Leader will make every effort to ensure that your experience is as possible, while respecting safety instructions and regulations imposed by the AECO.*





FLIGHT NOME/SEATTLE + TRANSFER



itinerary





### Highlights

- With featured guests Ian Dawson and Sue Flood, British Photo Ambassadors.
- The eye and the advice of our photo ambassador, a privileged opportunity to immortalise your trip with, in the programme: workshops, conferences and personalized advice to improve your photographic skills.
- The crossing of the Northwest Passage by a unique maritime route, long coveted by the great explorers, only accessible thanks to *Le Commandant Charcot*, capable of sailing into the very heart of the ice.
- Enjoy the unique comfort of Commander Charcot during days of exploration on board, where time stands still in the middle of the ice floe, in the special silence of the polar desert.
- The west coast of Greenland, between traditional villages, glaciers and monumental icebergs.
- Meeting the Inuit communities of the west coast of Greenland.
- Discovery of Nuuk, the capital of Greenland.
- An exploration into the heart of the ice in the Northwest Passage and the contemplation of sublime reliefs of unspoiled and immaculate landscapes, which are constantly changing.
- Landscapes: icy channels, fjords, vast expanses of ice floe, icebergs (Disko Bay), myriads of jagged islands, blue-toned glaciers, mountain chains, vertiginous walls, expanses of tundra.
- Fauna: Arctic foxes, sea birds, belugas, bowhead whales, walruses and the possibility of seeing polar bears.
- Brand-new activities: kayaking, hiking or snowshoeing, ice fishing, polar plunge.





Ports of Call & Excursions

12 August 2024 - [Reykjavik](#)

Embarkation 12/08/2024 from 16:00 to 17:00 - Departure 12/08/2024 at 18:00

Iceland’s capital stretches along the edge of a vast bay in the west of the country. **Perlan**, the “Pearl of Reykjavik”, a museum located on ’Oskjuhlíð hill, offers a panoramic view of the lush, green landscapes. A little further, one can easily spot the signpost showing the way to the evangelical **Hallgrímskirkja** church, and to the historical centre where one can stroll along the Skólavörðustígur and the Laugavegur, two lively streets with charming small shops. For some relaxation just outside of the city, visitors have the opportunity to visit the Reykjanes peninsula and its famous thermal lagoons of the **Blue Lagoon**.



13 August 2024 - 14 August 2024 - [Sailing through the Denmark Strait](#)

Arrival 13/08/2024 - Departure 14/08/2024

Lying between Greenland and Iceland, the **Denmark Strait** was crossed for the first time by the Vikings in the late 10th century, during Erik the Red’s expeditions. In the Second World War, its waters were the theatre of a battle between the Kriegsmarine and the Royal Navy, on 24 May 1941. In the wintertime, extremely dense pack ice forms along the Greenlandic coasts and, while the Transpolar Drift sweeps icebergs along throughout the year, the strait is generally clear of ice during the summer. In the depths of the strait lies the world’s largest waterfall, an undersea cataract formed by the difference in temperature between the cold waters of the Greenland Sea and the warmer waters of the Irminger Sea. Numerous cetacean species thrive in this rich ecosystem.





15 August 2024 - [Prins Christian Sund](#)

Arrival 15/08/2024 - Departure 15/08/2024

Your ship glides silently towards the Greenland coast, in a setting punctuated by pointed peaks and majestic glaciers... You are on the verge of crossing **the Prins Christian Sund**, a narrow channel that stretches out and zigzags over some **one hundred kilometres** between Greenland’s south-east and south-west. Fall under the spell of the primitive beauty of these unique landscapes, including rocky cliffs and waterfalls that are fed by the ice sheet and plunge into the icy waters. Here, **bearded seals** love to lie on the floating ice to soak up the sunshine.



16 August 2024 - [Aappilattoq \(Augpilatok\)](#)

Arrival 16/08/2024 - Departure 16/08/2024

**Aappilattoq (Augpilatok)**, is a small Inuit village of around one hundred inhabitants, whose name means “sea anemone” in Greenlandic. Located in a mountainous region inaccessible by road, its picturesque, colourful houses stretch out to the southern tip of Greenland, on the banks of the spectacular **Prince Christian Sound**. Some one hundred kilometres long, the sound connects the Labrador Sea to the Irminger Sea, meandering through stunning landscapes such as majestic glaciers, craggy peaks, and rocky cliffs with waterfalls fed by the ice sheet. This region was uninhabited in the 19th century. The village was created in the 1920s and the main activities revolve around hunting, fishing and livestock farming.







17 August 2024 - [Nuuk](#)

Arrival 17/08/2024 - Departure 17/08/2024

When Erik Le Rouge, the exiled Norse chief, landed on the coast of Nuuk, he found a fertile and welcoming land dotted with fjords. He settled there with a group of his former countrymen, and **the Norse** remained the principal inhabitants until, over a period of 500 years, their population declined and gave way to the Inuit. **Nuuk** is situated at the mouth of one of the largest networks of fjords in the world, where the waters never freeze.



The town spreads gently out towards the **Davis Strait** and enjoys an historic center that is particularly rich in national heritage. The vivid reds, blues, greens and yellows of the houses are a lively contrast to the somber waters of Greenland and serve to lift the spirits of the locals during the Winter months.

18 August 2024 - [At sea aboard Le Commandant Charcot](#)

Arrival 18/08/2024 - Departure 18/08/2024

Spend exceptional moments sailing aboard Le Commandant Charcot, the world’s first luxury polar exploration vessel and the first PC2-class polar cruise ship capable of sailing into the very heart of the ice, on seas and oceans which the frozen conditions render inaccessible to ordinary ships. Le Commandant Charcot is fitted with oceanographic and scientific equipment selected by a committee of experts. Take advantage of the on-board lectures and opportunities for discussion with these specialists to learn more about the poles. Participate in furthering scientific research with PONANT and let us discover together what these fascinating destinations have yet to reveal to us.





19 August 2024 - [Disko Bay](#)

Arrival 19/08/2024 - Departure 19/08/2024

To the east of Baffin Bay, discover **Disko Bay**, scattered with countless icebergs produced by the Ilulissat Icefjord, a **UNESCO World Heritage Site**. From your ship, admire the majestic ballet of these ice giants as they slowly drift across the dark waters. This site is a natural marvel of Greenland, and is also renowned as an observation point for the region’s many humpback whales. The encounters with wild fauna and stunning landscapes in the heart of this spectacular and fragile nature will be pure moments of wonder for you.



20 August 2024 - [At sea aboard Le Commandant Charcot](#)

Arrival 20/08/2024 - Departure 20/08/2024

Spend exceptional moments sailing aboard Le Commandant Charcot, the world’s first luxury polar exploration vessel and the first PC2-class polar cruise ship capable of sailing into the very heart of the ice, on seas and oceans which the frozen conditions render inaccessible to ordinary ships. Le Commandant Charcot is fitted with oceanographic and scientific equipment selected by a committee of experts. Take advantage of the on-board lectures and opportunities for discussion with these specialists to learn more about the poles. Participate in furthering scientific research with PONANT and let us discover together what these fascinating destinations have yet to reveal to us.





21 August 2024 - [Pond Inlet, Nunavut](#)

Arrival 21/08/2024 - Departure 21/08/2024

On **Baffin Island**, located in northern Canada at the mouth of the famous NorthWest Passage, there is a small Inuit settlement at the very bounds of infinity. To get there, cross the **Arctic Circle**, the imaginary line that separates man from lands of mystery and wonder. It's not so much the way of life that sets Pond Inlet's inhabitants apart, so much as the setting. Snow-capped mountains, **fjords** and **glaciers**



combine in a dazzling natural environment that fills space and expands time. Some discoveries change you forever: this is one of them.

22 August 2024 - [Lancaster Sound](#)

Arrival 22/08/2024 - Departure 22/08/2024

Between **Devon Island** and **Baffin Island**, in the Canadian territory of Nunavut, **Lancaster Sound** forms part of the **Northwest Passage**, a shipping route crossing the Canadian Arctic Archipelago, along the northern coast of North America. Coveted for almost 300 years, it saw several expeditions including the fatal one led by John Franklin, seen for the last time near Lancaster Sound in August 1845. Many colonies of cetaceans, polar bears and seabirds have



taken up residence in or near these nourishing waters at the confluence of the currents. Situated in Inuit territory, the Sound is the subject of plans to create a marine conservation area intended to protect this rich ecosystem and its inhabitants.





23 August 2024 - [Devon Island, Nunavut](#)

Arrival 23/08/2024 - Departure 23/08/2024

Located in Baffin Bay, **Devon Island** is part of the Canadian Arctic Archipelago. Anchored on the Arctic Cordillera, its rocky surface, similar to that of Mars, is of great interest to scientists. Robert Bylot and William Baffin were the first Europeans to sight Devon Island in 1616 but it would be mapped two centuries later by the British sailor William E. Parry, who named it after the eponymous English region. Around 1920, the **Hudson's Bay Company** set up a fur-trading outpost there, until the departure of the Inuits in 1936. A new attempt to populate it was made at the beginning of the 1950s. Only a few buildings in ruins, vestiges of that time, remain today.



24 August 2024 - [Beechey Island, Nunavut](#)

Arrival 24/08/2024 - Departure 24/08/2024

**Beechey Island**, at the eastern end of Resolute Bay, will call to mind some of the most important moments of Franklin's expedition. Sir John set off in 1845 in search of the mythical **Northwest Passage** and was forced to take shelter in Erebus Harbour for two long years, while he waited for the ice floes to recede and allow him a way through. It is a spectacular location; seeing the three wooden grave markers, bleached by the sun (indicating the burial places of at least three of Captain Franklin's men) and visiting the **memorial** that has been erected in memory of Franklin and his men can only reinforce the hushed sense of reverence. If the surrounding wilderness impresses us, the ochre and yellows of the rocky desert soften the landscape.





25 August 2024 - 27 August 2024 - [Exploring sea ice of Northwest Passage](#)

Arrival 25/08/2024 - Departure 27/08/2024

At the far north of the American continent, in the **most northerly part of the Arctic archipelago**, the Northwest Passage is the shortest waterway between the Atlantic and the Pacific Oceans. Its crossing has been coveted since the 15th century and **Roald Amundsen** was the first to do so in 1906. Blocked by thick ice floe for most of the year, to date only a lucky few have managed to sail from one side to the other. The crossing of this little-mapped and little-explored region is a challenge worthy of Le Commandant Charcot, which was designed to sail in extreme environments. Sheltered in its refined and protective setting, you will make the most of this exploration of the ice with the inimitable appeal of the first time: just like the first explorers, you will sail in its channels sculpted by glacial erosion and discover **spectacular landscapes**, made up of **craggy terrain** and **monumental fjords**. You will be able to measure the privilege of undertaking such an exploration in the light of the experience's rarity.



28 August 2024 - 29 August 2024 - [Banks Island](#)

Arrival 28/08/2024 - Departure 29/08/2024

Located in the north of Canadian archipelago of the Northwest Territories, Banks Island, also known as Banks Land offers landscapes that are as sumptuous as they are spectacular. The island, covering some 70,000 km<sup>2</sup>, offers a landscape of hills and valleys as well as sheer cliffs and canyons, a result of the glacial erosion. To the north of the island, the **Aulavik National Park** is home to a very rich wildlife mainly consisting of Arctic wolves, muskox, caribou, Arctic foxes, lemmings and many varieties of birds.





30 August 2024 - 2 September 2024 - [Exploring sea ice in Beaufort Sea](#)

Arrival 30/08/2024 - Departure 02/09/2024

Bordering the north coasts of Alaska and Canada, the **Beaufort Sea** was feared for centuries because of its extreme climatic conditions. Covered for most of the year with a **thick layer of ice**, and **unexplored until 1914**, this part of the Arctic Ocean, named in honour of the British Admiral Francis Beaufort, will reveal its magnificent icy landscapes to you. With a bit of luck, maybe you will cross the path of some polar bears, since the region is renowned for sheltering the Lord of the Arctic.



3 September 2024 - [Sailing in Beaufort Sea](#)

Arrival 03/09/2024 - Departure 03/09/2024

Delimited by the entrance to the Northwest Passage and the Amundsen Gulf to the east and by Canada's Yukon and Northwest Territories to the west, the **Beaufort Sea** makes up part of the – almost – inaccessible **Arctic Ocean**. Due to its extreme weather conditions, it was not explored until 1914, by the Canadian explorer **Vilhjalmur Stefansson**. However, it was named after **Francis Beaufort**, a British admiral and hydrographer. You will sail on these remote



waters strewn with a mosaic of ice resulting from **sea-ice breakup**. Surrounded by this stunning scenery, you may spot a few **belugas** and **bowhead whales**, established in colonies in the region.





4 September 2024 - [Crossing the Bering Strait](#)

Arrival 04/09/2024 - Departure 04/09/2024

You will cross the Bering Strait, a 90-km (56-mile) wide maritime channel between eastern Siberia and Alaska, named after the Danish explorer Vitus Bering. You will sail this strait that people once used to walk across, during the last glaciations, from Asia to North America. The transfer of Alaska to the United States by the Russians, in 1867, turned the Strait into a significant geostrategic site nicknamed the “Ice Curtain” during the Cold War. Delineated in 1990, the border between the two countries is located in the middle of the Strait, between the two **Diomed Islands**, making one of them Russian and the other American. During your crossing, favourable conditions will be conducive to a moving encounter with wildlife, attracted by these nourishing waters.



5 September 2024 - [Nome, Alaska](#)

Arrival 05/09/2024 - Disembarkation 05/09/2024 at 08:00

Located along the Bering Strait at the westernmost point of Alaska, **Nome** offers the rustic charm of a former gold-mining town, set in the middle of magnificent wilderness. As you weave in and out of the brightly coloured houses, you will discover the pioneering legacy that still marks local traditions. Fishing, **reindeer rearing**, sledge-racing... People here live from their manual labour. The surrounding plains provide stunning vantage points for observing Arctic fauna.





For your serenity, PONANT selects a flight and organises the transfer between the port and the airport. This package is included in your cruise fare.

Disembarkation Day - Nome/Seattle

Disembarkation.

Meet and greet at the port by our local English-speaking representative.

**Transfer to the airport in time for check-in for the PONANT selected flight from Nome to Seattle.**

Flight Nome/Seattle selected by PONANT. Approximate flight duration: 5 hours.

*We highly recommend you stay one night in Seattle after this flight*

### แนะนำ

- วันที่ 5 ก.ย. 2567 หลังจบทริปเรือสำรวจฯ บริการเที่ยวบินภายในจาก โนม, อลาสก้า สู่ ซีแอตเทิล, วอชิงตัน (ตัวเครื่องบินภายในฯ รวมในค่าแพ็คเกจเรือแล้ว)
- ผู้เดินทางควรจองที่พักใน ซีแอตเทิล, วอชิงตัน คืนวันที่ 5 ก.ย. 2567 เพิ่มอีก 1 คืน ก่อนกลับจุดหมายปลายทาง
- ผู้เดินทางควรขอวีซ่า Schengen Visa Multiple กรีนแลนด์ + วีซ่าอเมริกา + วีซ่าแคนาดา

### Please note:

- The flight included in the programme to this date, operated in economy class.
- Due to limited local transportation resources, waiting might be generated.
- For passengers in transit in Seattle, we recommend staying one night in Seattle after this flight.
- Programme and flight schedule are subject to change without prior notice.







อัตราค่าบริการ ต่อท่าน วันที่ 12ส.ค.-5ก.ย. 2567

โปรโมชั่น Ponant Bonus **ลด 30%** แล้ว (ยกเว้นห้อง Owner's Suite ไม่รวมโปรโมชั่น)

ประเภทห้องพัก	ราคาเริ่มต้น (พักคู่) EUR ราคาต่อท่าน ท่านละ
ห้องมีระเบียง Prestige Stateroom Deck 6 (ขนาด 215 ft <sup>2</sup> )	<b>38,870 EUR</b> จากปกติเริ่มต้น 50,582 EUR
ห้องดีลักซ์สวีท Deluxe Suite Deck 6 (ขนาด 28m <sup>2</sup> )	<b>41,410 EUR</b> จากปกติเริ่มต้น 53,833 EUR
ห้องเพรสทิจ สวีท Prestige Suite Deck 8 (ขนาด 40m <sup>2</sup> )	<b>57,030 EUR</b> จากปกติเริ่มต้น 74,139 EUR
ห้องแกรนด์ เพรสทิจ สวีท Grand Prestige Suite Deck 6 (ขนาด 42m <sup>2</sup> )	<b>60,670 EUR</b> จากปกติเริ่มต้น 78,871 EUR
ห้องพริวิลิจสวีท Privilege Suite Deck 8 (ขนาด 48 m <sup>2</sup> ) รองรับได้ถึง 4 ท่าน	<b>64,300 EUR</b> จากปกติเริ่มต้น 83,590-EUR
ห้องดูเพล็กซ์ สวีท Duplex Suite Deck 6 (ขนาด 94 m <sup>2</sup> ) รองรับได้ถึง 4 ท่าน	<b>87,910 EUR</b> จากปกติเริ่มต้น 114,283-EUR
ห้องชุด สวีท Owner's Suite (ขนาด 115 m <sup>2</sup> ) รองรับได้ถึง 6 ท่าน	<b>147,490 EUR</b>

อัตรานี้เป็นราคาเริ่มต้น ราคาอาจเปลี่ยนแปลงได้เนื่องจากการปรับของอัตราแลกเปลี่ยนเงินต่างประเทศ การเรียกเก็บเซอร์ชาร์จจากทางเรือเพิ่มเติม กรุณาเช็คราคาอีกครั้งเมื่อต้องการจองเรือ

สนใจห้องพักบนเรือประเภทอื่น ๆ นอกเหนือจากที่ระบุ โปรดสอบถามค่าบริการเพิ่มเติมจากเจ้าหน้าที่

จองตั๋วเครื่องบิน **รับประกันราคาถูก** กรุณาติดต่อเจ้าหน้าที่





**This programme includes:**

- Flight Nome/Seattle selected by PONANT in economy class.
- The transfer mentioned in the programme.
- English-speaking assistance.
- ค่า WIFI, อาหาร เครื่องดื่มบนเรือทุกมื้อบนเรือ, ทัวร์เสริมบนฝั่ง (ยกเว้นทัวร์เสริมพิเศษ เป็นไปตามเงื่อนไขเรือฯ)

**This programme does not include:**

- Tips for the driver and local guide. ค่าทิปไกด์ท้องถิ่น ที่นำเที่ยวบนฝั่ง
- Personal expenses.
- Any other service not mentioned in the programme.
- ค่าวีซ่า Schengen Visa Multiple กรีนแลนด์, วีซ่าอเมริกา, วีซ่าแคนาดา
- ตัวเครื่องบินไปกลับ นอกเหนือจากที่ระบุในรายการ
- อาหาร, เครื่องดื่มพิเศษ, บริการอื่นๆ ที่ท่านสั่งเพิ่มเติมกับทางเรือ นอกเหนือจากที่ระบุในโปรแกรม
- ค่าใช้จ่ายส่วนตัวอื่นๆ เช่น ค่าซักรีด ค่าโทรศัพท์ ค่าเครื่องดื่ม ฯลฯ
- ค่าภาษีมูลค่าเพิ่ม 7% และภาษีหัก ณ ที่จ่าย 3%
- ค่าประกันภัยการเดินทาง

**เงื่อนไขการชำระเงิน**

- มัดจำท่านละ 25% ของค่าแพ็คเกจ ภายใน 3 วันหลังทำการจอง
- ชำระส่วนเหลือ 120 วันทำการ ก่อนเดินทาง
- กรณีจองน้อยกว่า 120 วันทำการก่อนเดินทาง โปรดชำระค่าแพ็คเกจยอดเต็มจำนวน

**เงื่อนไขการยกเลิก**

- หลังจากทำการจอง 25 วัน           หักค่าบริการ Euro 150
- 230-374 วันก่อนเดินทาง       หักค่าบริการ 10% ของค่าเรือ
- 110-229 วันก่อนเดินทาง       หักค่าบริการ 25% ของค่าเรือ
- 109 วันก่อนเดินทาง           หักค่าบริการ 100% ของค่าเรือ

**เงื่อนไขและความรับผิดชอบ**

บริษัทเป็นเพียงตัวแทนรับจองแพ็คเกจทัวร์ สายการบิน และ ตัวแทนการท่องเที่ยวในต่างประเทศ ซึ่งไม่อาจรับผิดชอบต่อความเสียหายต่างๆ ที่อยู่นอกเหนือการควบคุมของเจ้าหน้าที่บริษัทฯ อาทิ การนัดหยุดงาน การจลาจล เปลี่ยนแปลงกำหนดเวลาในตารางบิน ภัยธรรมชาติ ฯลฯ หรือค่าใช้จ่ายเพิ่มเติมที่เกิดขึ้นทั้งทางตรงหรือทางอ้อมเช่น การเจ็บป่วย การถูกทำร้าย การสูญหาย ความล่าช้าหรือจากอุบัติเหตุต่างๆ ฯลฯ และการตอบปฏิเสธการเข้า และออกเมืองของเจ้าหน้าที่ตรวจคนเข้าหรือออกเมือง อันเนื่องมาจากมีสิ่งผิดกฎหมาย หรือเอกสารการเดินทางไม่ถูกต้อง หรือการถูกปฏิเสธในกรณีอื่น

**เพื่อประโยชน์ของผู้เดินทาง โปรดศึกษาเงื่อนไขการจองทัวร์ และการยกเลิกทัวร์ ที่ระบุในรายการทั้งหมด หลังจากท่านทำการจองทัวร์แล้ว ทางบริษัทจะถือว่าท่านเข้าใจ และพร้อมปฏิบัติตามเงื่อนไขดังกล่าว**





## ตัวอย่างภาพห้องพักผ่อนเรือ Le Commandant Charcot

### PRESTIGE STATEROOM DECK 6



- A king-size bed (180 x 200 cm) or two single beds (90 x 200 cm)
- A bathroom with shower
- A panoramic sliding bay window
- A 5 m<sup>2</sup> glazed private balcony





## DELUXE SUITE DECK 6



- A lounge area with chaise longue and two armchairs
- A king-size bed (180 x 200 cm) or two single beds (90 x 200 cm)
- A bathroom with shower
- A panoramic sliding bay window
- A 5 m<sup>2</sup> glazed private balcony





### PRESTIGE SUITE DECK 8

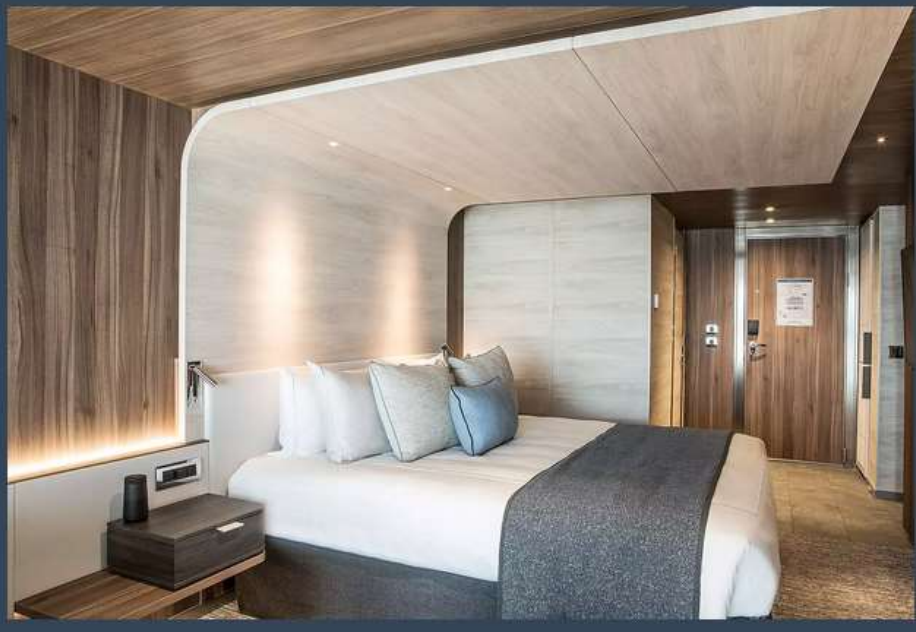


- A lounge with sofa, armchair, TV and sliding courtesy door
- A king-size bed (180 x 200 cm) or two single beds (90 x 200 cm)
- Two bathrooms with shower
- Two panoramic sliding bay windows
- A 10 m<sup>2</sup> glazed private balcony





### GRAND PRESTIGE SUITE DECK 6



- Priority boarding
- Champagne and fruit basket upon arrival
- Butler service
- An assortment of sweet or savoury canapés and fruit basket every day
- A lounge area with chaise longue and second TV
- A Samsung tablet connected to Wifi
- A king-size bed (180 x 200 cm) or two single beds (90 x 200 cm)
- A bathroom with shower and Balneo bathtub
- A panoramic sliding bay window
- A 5 m<sup>2</sup> glazed private balcony
- Two pairs of Swarovski CL Companion 10 x 30 binoculars





### PRIVILEGE SUITE DECK 8

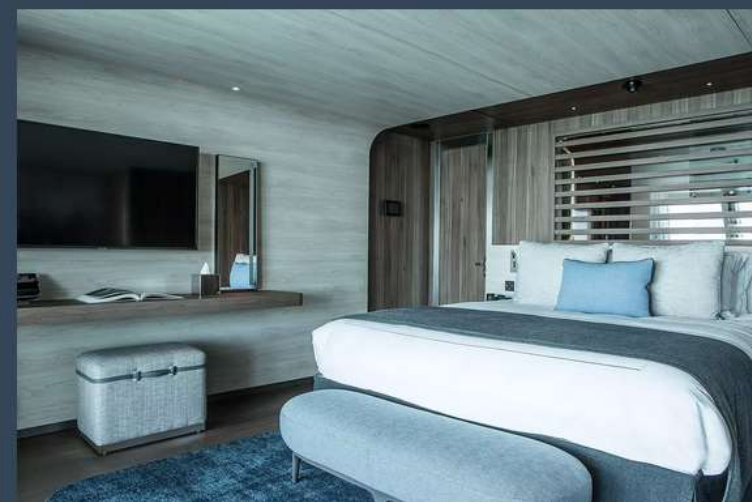


- Priority boarding
- Champagne and fruit basket upon arrival
- Butler service
- An assortment of sweet or savoury canapés and fruit basket every day
- A lounge with sofa bed, armchair, and sliding courtesy door
- A Samsung tablet connected to Wifi
- A bedroom with king-size bed (180 x 200 cm) or two single beds (90 x 200 cm)
- A bathroom with shower and Balneo bathtub
- Two panoramic sliding doors and rectangular porthole
- A 12.5 m<sup>2</sup> glazed private balcony
- Two pairs of Swarovski CL Companion 10 x 30 binoculars





DUPLEX SUITE DECK 6



- Private return transfer
- Priority boarding
- Champagne and fruit basket upon arrival
- Butler service
- An assortment of sweet or savoury canapés and a basket of fruit every day
- A lounge with armchairs, sofa bed, steam fireplace and TV
- A dining room with a 6-seater table
- A minibar with RIEDEL crystal glasses
- A Samsung tablet connected to Wi-Fi
- A bedroom with king-size bed (180 x 200 cm) or two single beds (90 x 200 cm) and TV
- A bathroom with shower and balneo bathtub
- Five panoramic windows and a glazed panoramic swing door
- A private 26 m<sup>2</sup> terrace: outdoor lounge with sofa and armchairs, jacuzzi
- Two pairs of Swarovski CL Companion 10 x 30 binoculars







OWNER'S SUITE



- Private return transfer





- Priority boarding
- Champagne and fruit basket upon arrival
- utler service
- An assortment of sweet or savoury canapés and fruit basket every day
- A bedroom with king-size bed (180 x 200 cm) or two single beds (90 x 200 cm)
- A living room with armchairs, two sofa beds, steam fireplace, and second TV
- A desk and bookcase
- A Samsung tablet connected to Wifi
- A dining room with a 6-seater table
- A minibar with RIEDEL crystal glasses
- A bathroom with shower and Balneo bathtub
- A one-hour spa treatments per person (for 2 people) in the well-being space, chosen from the facial and body treatments on offer
- A private 186 m<sup>2</sup> terrace: outdoor lounge with deckchairs, hot tub, two sofas, and dining table
- Two panoramic sliding bay windows
- Two pairs of Swarovski CL Companion 10 x 30 binoculars
- A Swarovski Optik ST VISTA telescope

### ----- Services provided -----

- Glazed private balcony for all our staterooms and suites
- Terrace for the Duplex suites and the Owner's suite
- 24-hour room service
- Inclusive Wifi internet access (availability dependent on navigation and latitude)
- Individually-controlled air conditioning
- Dressing room with shelves and closet
- Dressing table and hairdryer
- Dyptique Paris top-of-the-line bath products
- Minibar
- Nespresso coffee maker and boiler
- Electronic safe
- Direct line telephone
- Bose Bluetooth speaker
- Flat screen TV, international channels (availability dependent on navigation) and videos on demand
- 110V American (two flat pins)/220V European (round sockets with two round pins)
- 3 ADA staterooms

